

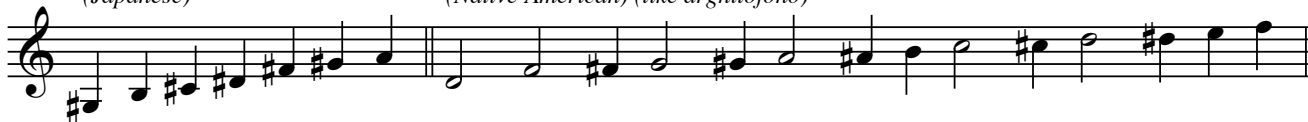
# Anton's Ethnic Flute Ranges

Pitches are relative to humidity and other climate changes  
(list does not include half hole pitches)  
Half notes indicate the primary notes of the instrument

Collection as of  
1/6/10

*Shakuhachi*  
(Japanese)

*Cedar Flute - D*  
(Native American) (like arghilofono)



*Cedar Flute - A*  
(Native American)

*Birch Flute - D*  
(Native American)



*Cedar Flute - G*  
(Native American)

*Xiao*  
(Chinese)



*Arabic Scale*  
*Bamboo Flute (American)*

*Bamboo Flute DD*  
(American)

*Bamboo Flute A*  
(American)



*Bamboo Flute F*  
(Chinese)

*Bamboo Flute B*  
(American)

*Quena - light*  
(Bolivia)



*Quena - dark*  
(Bolivia)

*Bamboo Recorder*  
(India)

*Bamboo Bird Flute*  
(Chinese)

*Nose Flute*  
(Hawai'i)

*Bamboo Whistle*  
(Japan)



*Hulusi (Gourd Flute)*  
(Chinese)

*Kona*  
(Hawai'i)  
(played like brass)



*Bamboo Native American #1*

*Bamboo Native American #2*



*Bamboo Native American #3*

